

# Investing in THWs

Doulas, CHWs & Peers



# Agenda

About Health Share

Early investments

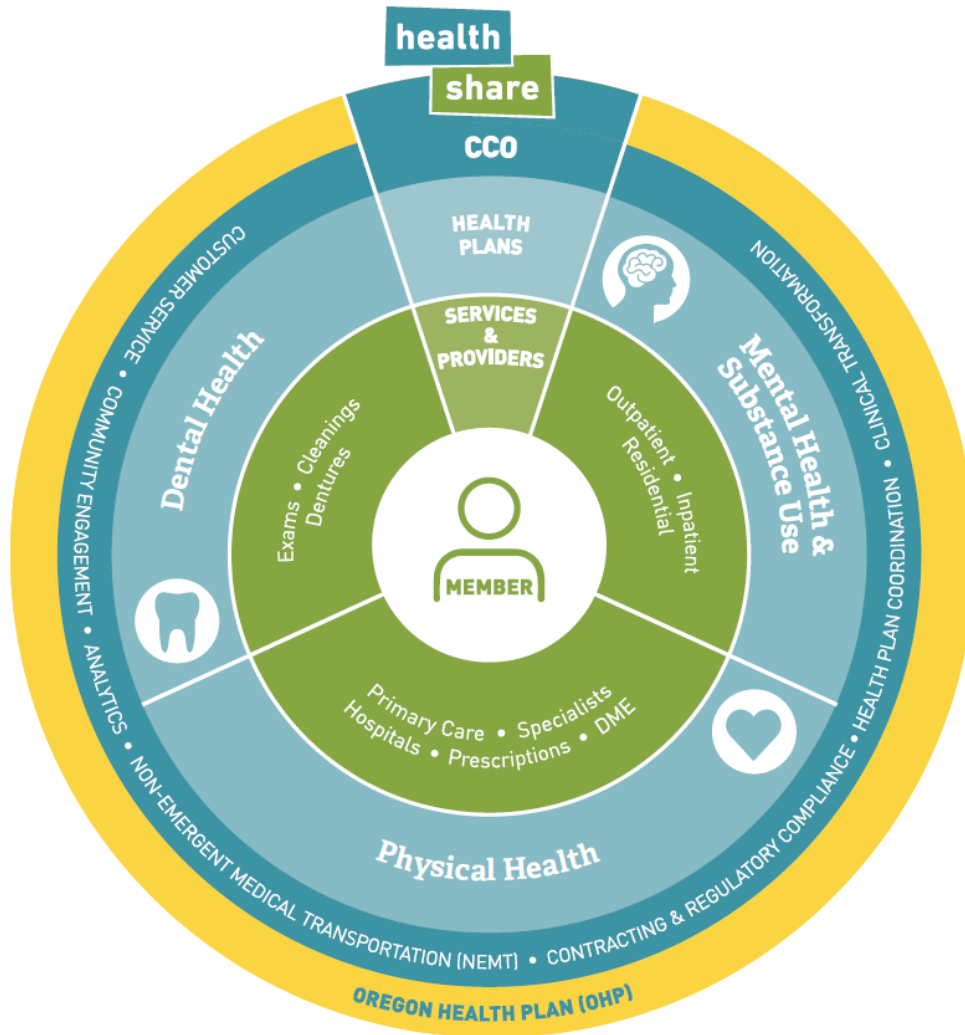
Doulas

CHWs

Peers

# Health Share of Oregon





### Physical Health Plans

CareOregon  
Kaiser Permanente  
Providence Health & Services  
Tuality Healthcare

### Dental Health Plans

Access Dental Plan  
Advantage Dental Services  
Capitol Dental Care  
CareOregon Dental  
Family Dental Care  
Kaiser Permanente Dental  
Managed Dental Care  
ODS  
Willamette Dental Group

### Mental Health & Substance Use Plans

Clackamas County  
Multnomah County  
Washington County

## Our Mission

We partner with communities to achieve ongoing transformation, health equity and the best possible health for each individual.

## Our Vision

A healthy community for all.

## Our Values

At Health Share, we believe:

- member voice and experience are at the center of what we do
- health equity is achievable and requires deliberate action on our part
- in honoring our commitments
- using continuous improvement is vital to our efforts
- in operating transparently and using data to guide our work
- in working in partnership to maximize our resources



# Early Investments

# Drivers of our early investment

Transformation fund

CHIP

Transformation Plan

*“I want access to the services I need, from a perspective I can relate to, in a language I am comfortable with, at a location I can get to.”*

*Member, Health Share of Oregon*



Douglas

# Current Challenges

Inadequate payment for services

Lack of participation in the registry

Limited use of doulas by pregnant women from communities of color

Insufficient doulas from communities of color

Need for improvement in relationship between maternity care community and doulas

# Reasons for caution

Doulas' role as support and advocacy for pregnant women may change as they become part of maternity care team

Doulas' role is not diagnosis, treatment, case management or risk assessment – we put them at risk if we build their role around that

Doulas can be effective bridges to address cultural efficacy and improve trust between communities and health care, but we should not expect them to reduce disparities in birth outcomes

Payment structure needs to start at OHA and CCOs can take it from there (although this is rare)

# Proposal

## Health Share RFP

Support for one or more doula organizations to:

- *Reach communities of color for doula support*
- *Build the doula workforce with communities of color*
- *Establish better relationships with maternity care teams to improve trust, connect with pregnant women and facilitate payment*
- *Track the experiences of doulas and patients to understand what works*

Timeline: Spring 2017 to release RFP,  
contract from July 2017-July 2018<sup>12</sup>

Peers

# Goal

Ensure any person in the tri-county area who wants access to a Peer for SUD has access to one

# Strategy

Make investments in the infrastructure to support Peers for SUD services

# Landscape

Funded a comprehensive environmental scan of PDS

- Barriers
- Needs
- Report with 36 recommendations



# Next Steps

## Peer Task Force

### 2 main recommendations

1. Build PDS capacity
2. Address system challenges

CHWs

# Warriors of Wellness Pilot

## Multicultural CHW collaborative

- Culturally specific
- Community-based
- ORCHWA serves as hub
- Improve health & decrease disparities
- Connection to health systems

# Goal of CHW investment

Create a robust & sustainable culturally specific CHW workforce

Improve health outcomes

Reduce Disparities

Improve access to care

Reduce costs

# Strategy

Invest in ORCHWA

Partnership with KP and Prov

Make it easy for health systems

# Next Steps

## Pending infrastructure request

- CHW Integration
- Workforce Development
- Technical Assistance

Michael Anderson-Nathe  
Chief Equity & Engagement Officer  
[michael@healthshareoregon.org](mailto:michael@healthshareoregon.org)  
503.416.4980

Together  
we are



Health Share of Oregon

